

Transition

During the 2015-2016 school year **60 children** were transitioned from Head Start and the Arkansas Better Chance (ABC) Program to Kindergarten.

CCSD-CCHS maintains a successful collaboration with all 3 elementary schools. Children are monitored from the time they enter kindergarten through 3rd grade. Parents are encouraged to be advocates for their children, and to be involved during their entire school career. Successful transitions are the key to continued educational achievement throughout a child's life.

Early Head Start

Early Head Start provides early learning, care & enrichment experiences to children in an early care & education setting. This year we have had the privilege of participating in the Early Childhood Partnership with UAPB. This partnership has provided the opportunity to serve **8 children ages 18 months to 36 months**. We are excited to experience the positive impact on the children and their families as they transition from their early years and beyond.

Exciting news

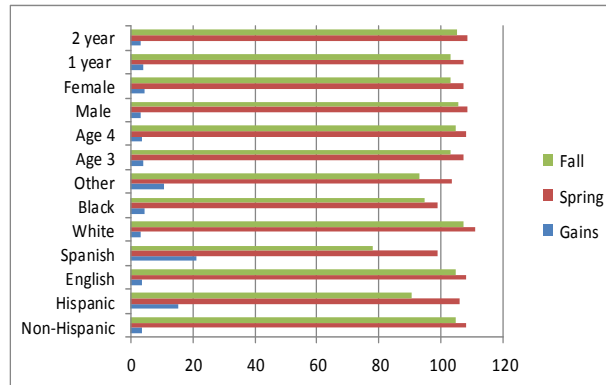
The past year our program was awarded a grant for new construction to replace the portable buildings at our Woodlawn site. The new construction is complete with 2 classrooms to serve **40 children** for the 2016-2017 school year.



Peabody Picture Vocabulary Test

Our program participated this year in the Peabody Picture Vocabulary Test (PPVT) which aims to measure the early learning gains of 3 and 4 year old children. It also seeks to understand any differences in learning gains among subgroups of children, including age, gender, race, ethnicity, and language. We are anticipating more growth with our 2 year students and with the implementation of a new curriculum.

PPVT Scores for 2015-2016



Quality Indicators

CCSD-CCHS and our child care centers are accredited by the Better Beginnings initiative administered by the Arkansas Department of Human Services. **All 3 (three) of our centers located in Rison, Kingsland and Woodlawn have achieved a level 3 rating, which is the highest rating awarded.**



Cleveland County School District
Cleveland County Head Start ABC Program

P.O. Box 600, 700 Main Street
 Rison, AR 71665
 Phone: 870-325-6324 Fax: 870-325-6602

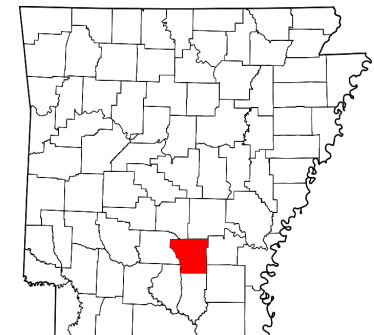
End of the Year

Highlights

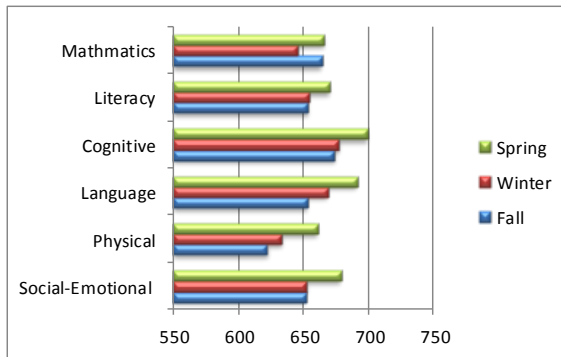
2016



Our mission is to bring strong awareness on positive family and child outcomes. To close the achievement gap and to build a better future for children, families, and communities served by the Head Start program.



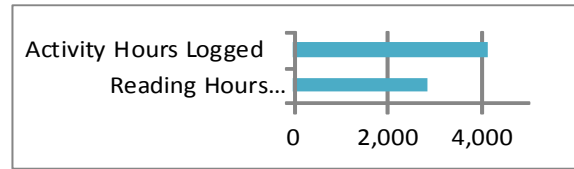
School Readiness Skills



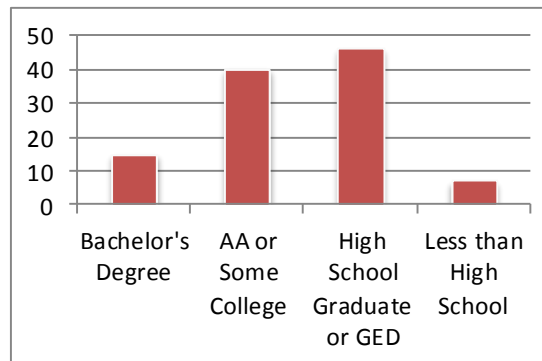
Way to Go Parents!

With an enrollment of 108 children and 100 families throughout the county, CCSD-Cleveland County Head Start involves parents in all aspects of our program. Parent involvement is crucial during the early childhood years and throughout a child's education. Parents are encouraged to volunteer and are always welcome in the classrooms. As part of our mission to involve parents in their child's education, home learning logs were sent out weekly encouraging reading and activities at home.

We are proud of the results below:



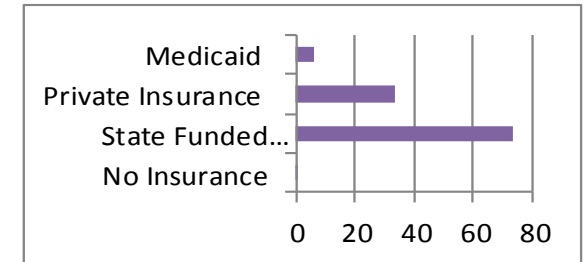
Parent Education Levels



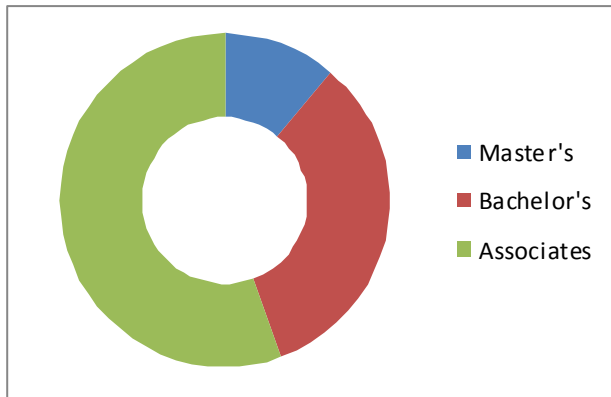
Mandatory Screenings Completed

Physical Exams Completed	116
Dental Exams Completed	116
Children up-to-date on Immunizations	119
Hearing & Vision Screenings Completed	119

Health Insurance



Meeting Teacher Requirements



Enrollment—Funding

Head Start	108 slots
ABC Program for School Success	28 slots
After School (2:30-5:30)	27 Slots

For the 2015-2016 School Year our average enrollment percentage was **100%**, and average daily attendance was at **87%**.

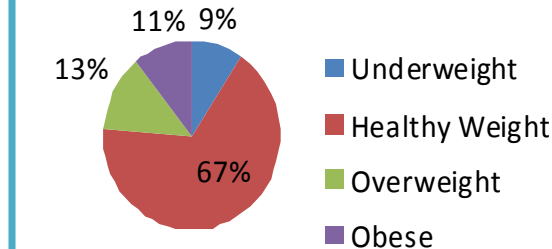
Head Start Funding	\$673,071
Head Start In-Kind Match	\$168,268
ABC Funding	\$136,080
ABC In-Kind Match	\$90,720
CCDF	\$115,205
Early Head Start	\$92,070

CCSD Head Start maintains a waitlist of approximately 25 children.

Community Outreach

Head Start Staff are very active in Community Outreach. We have staff involved in a number of community and faith-based organizations. We currently have members serving and holding offices in the following organizations: Rison Lions Club, Woodlawn Community Park Association, Single Parent Scholarship Fund of Cleveland County, Rison Booster Club, Care Coordinating Counsel, Cleveland County Park Association Board, and various church organizations.

Body Mass Index 2015-2016 Head Start Children



Head Start Budget

